



RANCH HOUSE DOORS

— *Redefining the Entrance™* —



MOUNTAIN MODERN COLLECTION

MOUNTAIN MODERN COLLECTION

Crafted for those who love the mountains, these premium all-wood garage doors bring together modern design and rugged beauty. Their clean, minimalist lines and organic textures create a seamless connection between home and nature. The contrast between dark metals and wood complete the mountain modern look.

IT'S AS EASY AS...



Model: MM-SD-Monarch **Species:** Nature Aged Fir **Wood Texture:** As Is **Glass:** Acid Etch **RHD-9632**



Model: MM-DD-Sierra Nevada **Species:** Rift Oak **Window:** RHD-SQ-4
Wood Texture: Smooth **Kick Plate:** Medium 1 Piece **RHD-9701**



Model: MM-SD-Cascades **Species:** Cedar **Window:** RHD-SQ-5
Wood Texture: Wire Brush Heavy **Kick Plate:** Large 2 Piece **RHD-8533**



CHOOSE YOUR DOOR STYLE

Mountain modern homes blend clean lines, natural materials, and warmth.

CHOOSE YOUR WOOD TYPE

Opt for cedar and natural woods to enhance mountain modern warmth.

CHOOSE YOUR OPTIONS

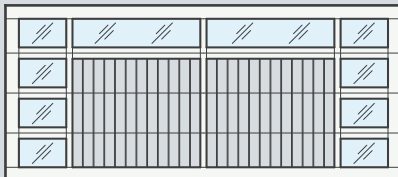
Mountain modern style shines with black hardware and minimalist windows.

CHOOSE YOUR DOOR STYLE

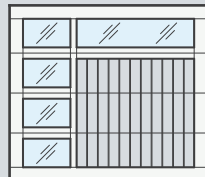
Scan For More Options



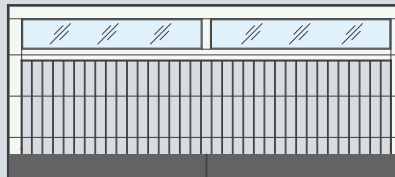
Model: MM-SD-Teton **Species:** Cedar **Window:** RHD-SQ-17 AL **Wood Texture:** Smooth **Kick Plate:** Medium 1 Piece **RHD-9699**



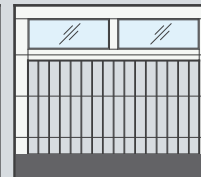
MM-DD-Monarch



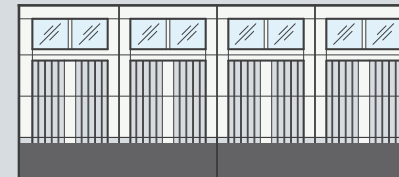
MM-SD-Monarch



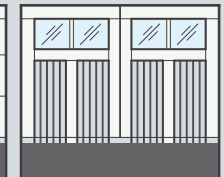
MM-DD-Andes KP: Medium 2 Piece



MM-SD-Andes



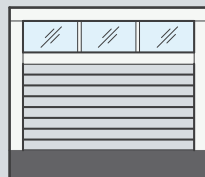
MM-DD-Teton KP: Medium 2 Piece



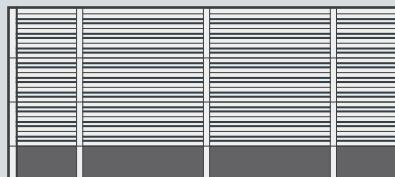
MM-SD-Teton



MM-DD-Sierra Nevada KP: Medium 1 Piece



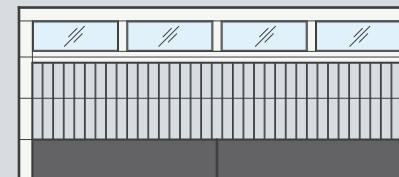
MM-SD-Sierra Nevada



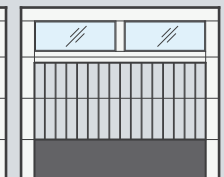
MM-DD-Whistler KP: Medium 4 Piece Split



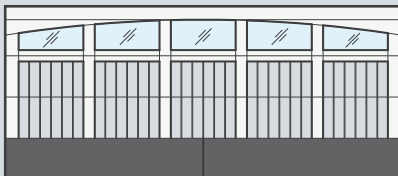
MM-SD-Whistler



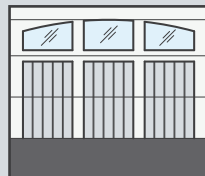
MM-DD-Dolomites KP: Medium 2 Piece



MM-SD-Dolomites



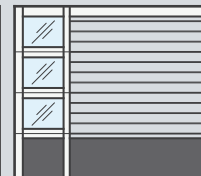
MM-DD-Cascades KP: Large 1 Piece



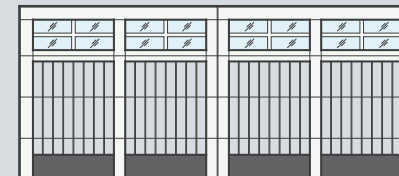
MM-SD-Cascades



MM-DD-Blue Ridge KP: Large 4 Piece Split



MM-SD-Blue Ridge



MM-DD-Alps KP: Small 4 Piece Split



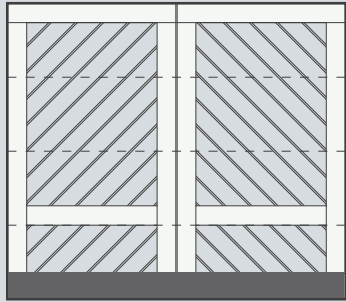
MM-SD-Alps

KP = Kick Plate

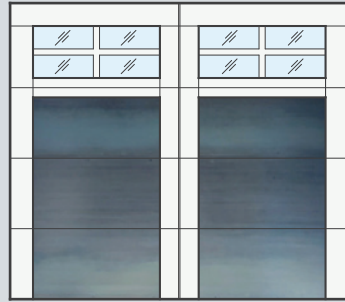


Model: MM-SD-Morris **Species:** Big Sky Gray **Wood Texture:** As Is **Kick Plate:** Small 2 Piece **RHD-9220**

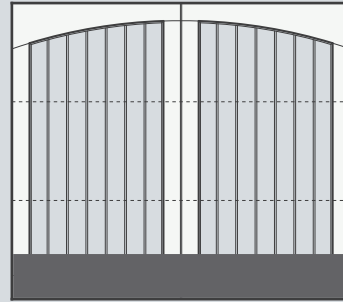
Model: MM-SD-Cordoba **Species:** STK Cedar **Wood Texture:** reSAWN **Kick Plate:** Large 2 Piece **RHD-9227**



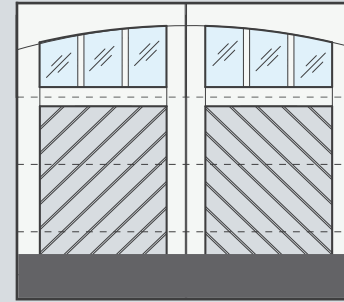
MM-SD-Willow KP: Small 1 Piece



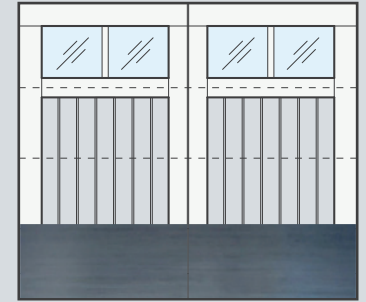
MM-SD-Francis KP: Large 2 Panel 3 Section Split, MT: Hot Roll Steel



MM-SD-Pamplona KP: Medium 1 Piece



MM-SD-Ryder KP: Medium 1 Piece



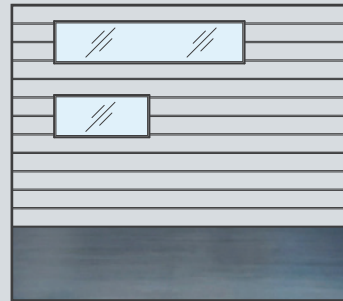
MM-SD-Cordoba KP: Large 2 Piece, MT: Hot Roll Steel



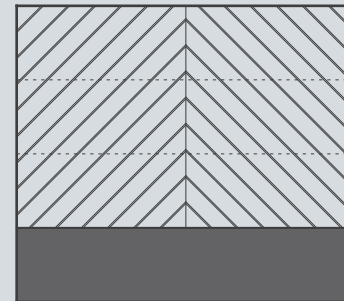
MM-SD-Fenway KP: Large 1 Piece, MT: Hot Roll Steel



MM-SD-Shelby KP: Medium 1 Piece



MM-SD-Incline KP: Large 1 Piece, MT: Hot Roll Steel



MM-SD-Nealtan KP: Large 1 Piece



MM-SD-Everest

KP = Kick Plate, MT = Metal Type

CHOOSE YOUR WOOD TYPE

2

STAIN GRADE WOODS

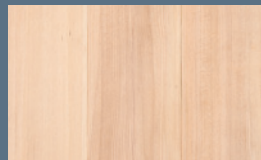
Top Recommended



Cedar - *Most Used*
Vertical Grain Western Red Cedar



VGDF
Vertical Grain Doug Fir



Hemlock
Vertical Grain Hemlock

PAINT GRADE WOODS

High-quality engineered wood.



Extrira Overlay, MDO Plywood Face
Exterior Grade MDF

Additional Species of Woods Available



Meranti Mahogany



African Mahogany



STK Cedar
Select Tight Knot Cedar

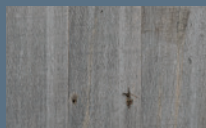


White Oak
Vertical Grain or Plain Sawn

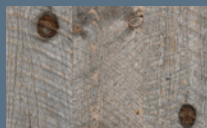


Yellow Cedar

Reclaimed Woods Available



Big Sky Gray
Mixed Pine



Nature Aged Fir
Pine and Fir



Kentucky Bourbon
Naturally Aged



White Birch
Mixed Pine



Marine Meranti
Pine and Fir

Reclaimed Cont.

Stain Grade Plywood


tricoya 

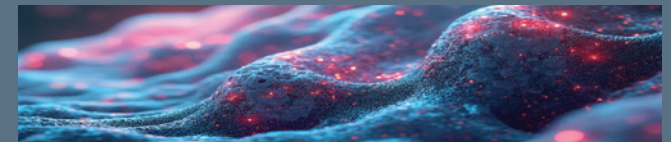


LOOKING TO PAINT YOUR DOORS BLACK?

Upgraded Materials - Paint Grade

The guaranteed choice for resistance to ultraviolet rays and water. Tricoya offers a 50-year warranty on the material only and can be painted black. Scan the QR code for Tricoya warranty information.

WARRANTY	STANDARD EXTIRA/MDO	tricoya 
	RHD WARRANTY 1 YEAR	RHD WARRANTY 5 YEAR
BLACK/DARK COLORS	EXTRIRA WARRANTY 9 YEAR	TRICOYA WARRANTY 45 YEAR
HIGH MOISTURE ENVIRONMENT	NOT RECOMMENDED	YES
FULL WEST EXPOSURE	\$	\$\$\$



TECHNOLOGICAL TREATED ADVANCED MATERIALS

Stain Grade Options:

- **Thermalized Wood** (e.g., Thermory) – Hemlock, Ash
- **Accoya Wood** – A specialized process alters the wood's cell structure, improving its technical properties to make it significantly stronger and more durable.

• NewTechWood

Scan the QR code for more information.



CHOOSE YOUR OPTIONS

3

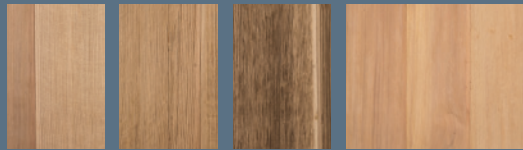
A WOOD TEXTURES

No Charge



Smooth reSAWN

Additional Charge



Wire Brush
From Left to Right - Light, Medium, Heavy

Hand Hewn Distressed

B INTERIOR EDGE OPTIONS



Square Eased Coped Step

C TONGUE & GROOVE OPTIONS



Tongue & Groove, V Joint

Tongue & Groove, Butt Joint



Tongue & Groove, Butt Joint
w/ 1/8" w x 1/8" d Channel Groove

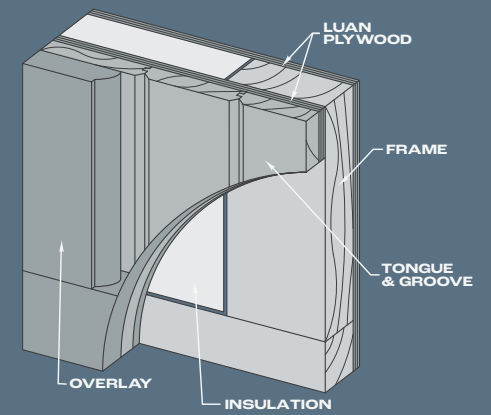
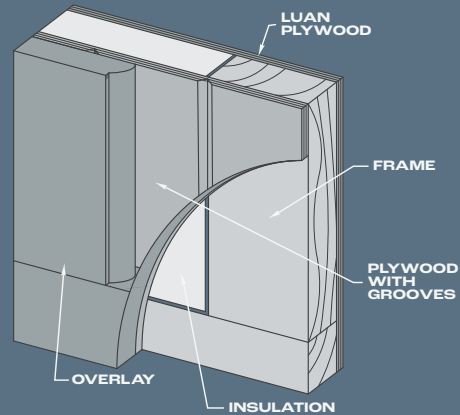
Tongue & Groove, Butt Joint
w/ 1/4" w x 1/8" d Channel Groove

NOTE: Also available in 1 x 2, 1 x 4 and 1 x 8 upon request. Scan QR code for more options.



CUSTOM DOOR SPECIFICATIONS

- **Face and Overlay Materials:** Vary depending on design.
- **Insulation:** 1 3/32" polystyrene insulation.
- **Frame:** 1 3/32" hem fir frame, finger-jointed (FJ).
- **Back:** 1/4" luan plywood.



PAINT GRADE

Composites and Plywoods

Used for Tongue-and-Groove face applications:

- **MDO:** 1/2" Medium Density Overlay – a resin-based birch veneer core plywood with phenolic glue for exterior use.
- **Extira:** A resin-based wood composite designed for exterior use.
- **Tricoya:** A resin-based wood composite

Note: We can custom-make plywood from any material you request.

STAIN GRADE

Materials

Used for Tongue-and-Groove face applications:

- **Clear Western Red Cedar**
- **West Coast Hemlock**
- **VG Douglas Fir**
- **Select Tight Knot Western Red Cedar**

Optional Plywood Faces

- **Marine Meranti Plywood**
- **White Birch Plywood**

Other species available upon request. Scan QR code for more options. Stain grade options available.



HARDWARE UPGRADES



Powder Coated Hardware

- **Black or White Powder Coat Available**
- **Custom Colors Available**

Noise Reduction Package

- **Quiet Hinges**
(Cannot be Powdercoated)



NEED FIRE-RATED OR WIND LOADED GARAGE DOOR?



WUI Wildland Urban Interface

Built with SFM Standard 12-7A-1 (Wildland Urban Interface Code). Full custom doors only.



Required Wind Loading?

*Compliant with wind load requirements of the 8th Edition (2023) of the Florida Building Code. *In accordance with ANSI/DASMA 108-17.

WINDOW OPTIONS

Note: These tops are drawn for 8-0 x 7-0 doors.

The mullions are 1 3/4" and tru divide lites, unless noted otherwise.



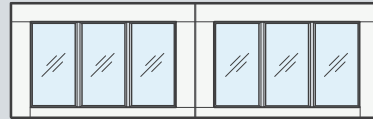
RHD-SQ-1



RHD-SQ-2



RHD-SQ-3



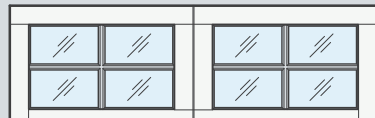
RHD-SQ-4



RHD-SQ-5



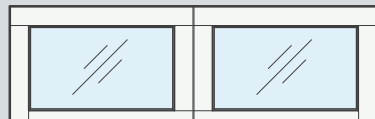
RHD-SQ-6



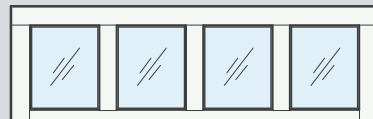
RHD-SQ-7



RHD-SQ-17

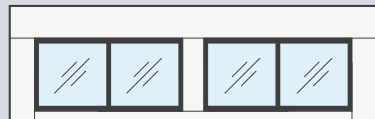


RHD-SQ-15

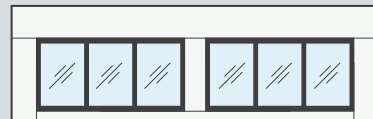


RHD-SQ-16

Aluminum Black Powder Coated Frames



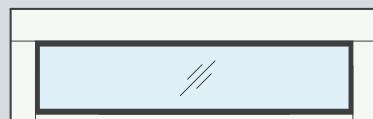
RHD-SQ-17 AL



RHD-SQ-4 AL

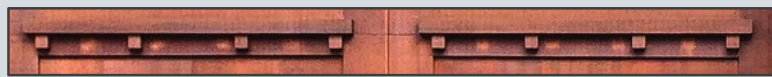


RHD-SQ-7 AL



RHD-SQ-18 AL

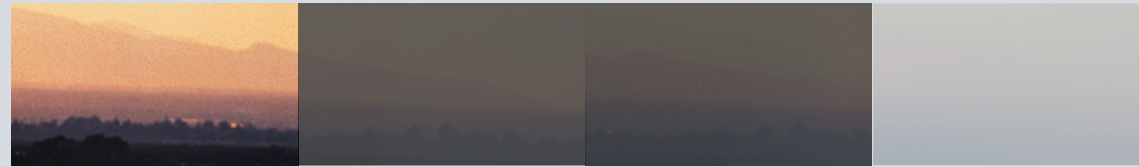
DENTIL SHELF OPTION



*Windows are Tru Divided unless otherwise noted. *Wood window are Tru Divided.

*Specialty glass available upon request. Arch (AR) can be added to any Square (SQ) design.

GLASS TYPE OPTIONS



Clear DSB Glass
Standard

Dark Gray

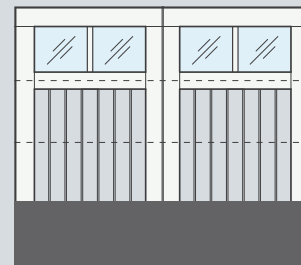
Dark Gray
w/Sand Blast Durashield

Acid Etch

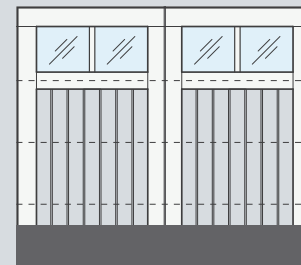


Scan QR code for more options. Clear / Upgrades are available with various types of glass. All glass is Annealed, Tempering is an optional upgrade. Insulated glass available upon request. Copyright Notice: All materials shown in this brochure are copyrighted and may not be duplicated in any form. ©2026 Ranch House Doors.

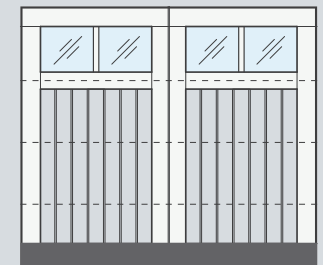
KICK PLATE OPTIONS



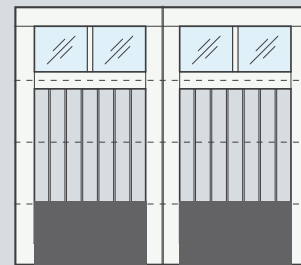
KP: Large 1 Piece - 21" - 24"



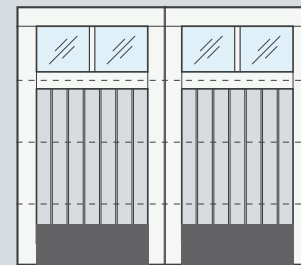
KP: Medium 1 Piece - 16" - 20"



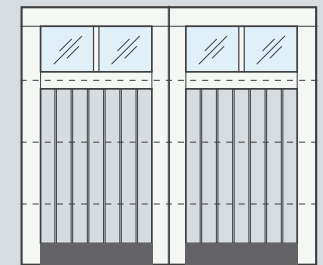
KP: Small 1 Piece - 8"



KP: Large Split 2 Piece - 21" - 24"



KP: Medium Split 2 Piece - 16" - 20"

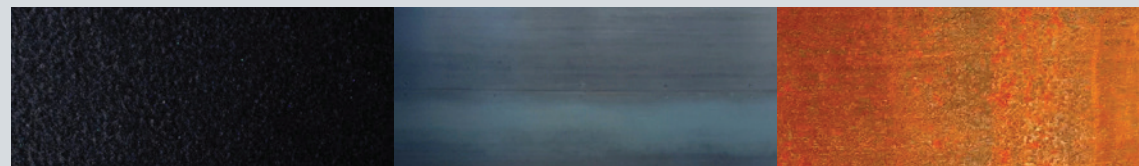


KP: Small Split 2 Piece - 8"

Double doors will have split seams. Custom plate available upon request. Example: Double panel on single door. KP = Kick Plate

METAL TYPE OPTIONS - KICK PLATES/PANELS

Top Recommended



Black Paint

Hot Roll Steel

Corten Steel
Vertical Grain Hemlock. Will Rust Over Time

BUILT ON LEGACY



RANCH HOUSE® DOORS

— *Redefining the Entrance™* —



PHONE

951.278.2884

ADDRESS

1527 Pomona Rd,
Corona, CA 92878



Scan the QR code for
RHD warranty/stain information.

In a small La Mirada garage more than two decades ago, our father, Mike Neal, built his first custom wood door. The garage was alive with the sounds of roaring machines, and the air was thick with sawdust—a symbol of hard work and creativity.

Dad often said, “I love the smell of sawdust in the morning.” That passion turned what began as a “little experiment” into Ranch House Doors—one of the nation’s premier door manufacturers.

Today, we carry on Dad’s legacy, creating handcrafted garage doors, entry doors, gates, and more for homes across the country. Our skilled design team is here to turn your ideas into reality, blending timeless craftsmanship with your unique style.

For us, every door is more than just a product; it’s an opportunity to make your home warm, functional, and truly exceptional. Because like Dad always said, “If you can think it, we can build it.”



Only garage doors featuring the official **Ranch House Doors serial number plate of authenticity** are genuine Ranch House Doors products. This serial number plate represents our commitment to craftsmanship, premium materials, and enduring quality. Doors without it are not made or authorized by Ranch House Doors and do not carry our warranty or brand guarantee. **Look for the serial number plate—it’s the mark of true craftsmanship.**